

PREMIUM ENGLISH CENTER

JOYFUL

ENGLISH

T-SHINE HOTEL CAMPUS, MACTAN
CEBU, PHILIPPINES

EVERY SUMMER BRING DIFFERENT STORIES THAT YOU WILL NEVER FORGET



CONTENTS

JOYFUL PREMIUM ENGLISH CENTER

- 03 Introduction of the Center
- 04 Features of the Center
- 05 Map of Key Locations
- 06 Photos of the Center
- 08 Hotel Room Introduction
- 09 Hotel Services

JOYFUL PROGRAM

- 10 ESL
- 11 ESL LIGHT
- 12 ESL CAREERLINK
- 14 POWER SPEAKING
- 15 TOEIC SPEAKING
- 16 IELTS SPEAKING
- 17 TARGET IELTS
- 18 FAMILY PROGRAM

JOYFUL ACTIVITY

- 20 Schedule
- 21 Contents
- 23 Photos

CHECKLIST

- 24 Checklist
- 26 Regulations





Welcome to Joyful Premium Education Center!

Joyful Premium Education Center, led by a team with over ten years of experience in Philippine language schools, integrates all their know-how to provide students with the highest quality English education services based on their rich experience and expertise. The center adheres to strict standards for selecting teachers and developing education programs to ensure the best education quality. Students have expressed high satisfaction with the teaching methods and the professionalism of the teachers at Joyful Premium Education Center, leading to rapid improvement in their English abilities. Particularly, the center has developed a variety of English courses specialized in speaking, which are ideal for efficiently improving skills in a short period.

Tshine campus of Joyful Premium Education Center, a newly constructed hotel in 2022, boasts clean and neat facilities. The Joyful Education Center building, situated within the hotel premises, enables convenient and safe walking access from the hotel to the academy, fostering an environment conducive to focusing on lessons. Students can comfortably use hotel facilities throughout their training period, including a swimming pool, fitness center, kids' room, massage shop, and cafe, enjoying full hotel services. This offers students a convenient and enriching living environment, helping them to enjoy perfect rest and maximized learning effects.

Located near famous resorts such as Jpark Resort and Plantation Bay, the Tshine campus is ideal for weekend leisure. Additionally, it provides excellent accessibility to the bustling areas of Cebu City, such as Nustar, SM Seaside Mall, and IL Corso, via the unique Newbridge Highway, allowing for travel within about 20 minutes. This geographical advantage offers students the opportunity to experience a variety of cultures and activities.

Joyful Premium Education Center is continually striving to provide the best educational and living environments, enabling students to learn and apply English more effectively.



01 PREMIUM ENGLISH CENTER IN THE HOTEL

Hotel-based English training is a new language training model that adds leisure and elegance to the training experience, providing a premium lifestyle space. Joyful Education has created the optimal environment for students to relax in a hotel and study English.

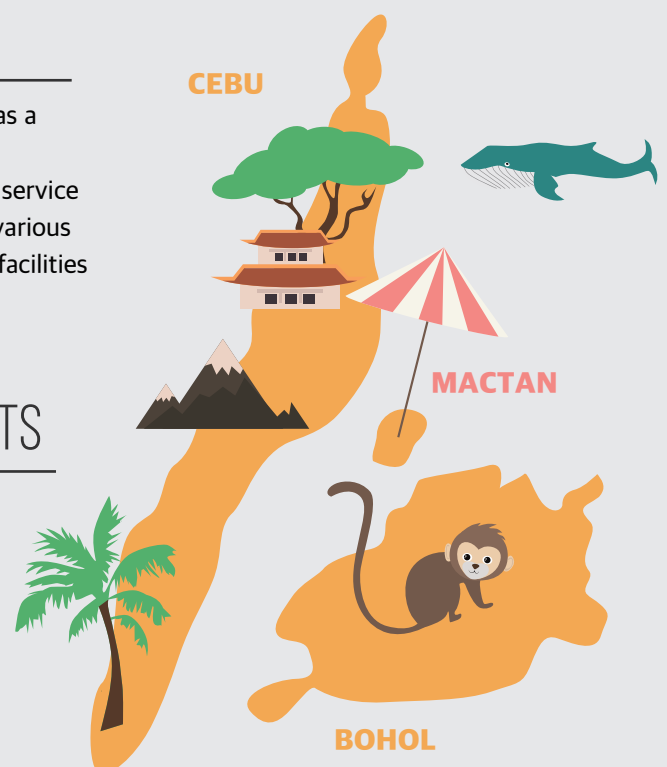
02 FEMALE FRIENDLY CAMPUS

Joyful Education Center promotes female-friendly language training as a new model for English center.

We provide various services such as shuttle bus service, safe call taxi service and diet meals (various salads and fruits) so that female students of various ages can live safely and healthily in a pleasant hotel with convenient facilities and enjoy studying English.

03 CAREER-ORIENTED EDUCATION EXPERTS

The Joyful Education management team at the Philippine language academy, made up of career-oriented education experts, boasts over 10 years of experience. We deliver the utmost trust and precisely identify the needs of our students, offering the crucial services required for language training.





**AYALA
CENTER CEBU**

CEBU CITY



**SM SEASIDE
SHOPPING MALL**



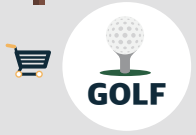
**NUSTAR
RESORT & CASINO**



IL CORSO MALL



**MACTAN CEBU
INTERNATIONAL
AIRPORT**



GOLF

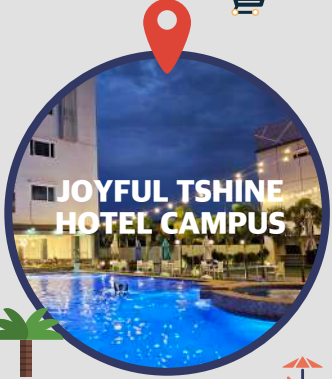
LAPU-LAPU CITY



**JPARK ISLAND
RESORT &
WATERPARK**



MALL



**JOYFUL TSHINE
HOTEL CAMPUS**



**PLANTATION BAY
RESORT & SPA**

*Mactan
island*


JOYFUL TSHINE HOTEL CAMPUS

- 5MINS TO BEACH
- 20MINS TO AIRPORT
- 20MINS TO SHOPPING MALL

**OLANGO
ISLAND**







 **Swimming Pool**
8am-9pm


 **Restaurant**
Breakfast, Lunch, Dinner

 **Cafe**
6am-9pm

 **Massage&Spa**
10am-11pm

 **Gym**
6am-10pm

 **Rooftop Bar**
12nn-11pm

 **Kids Room**
9am-10pm

 **English Library**
9am-10pm

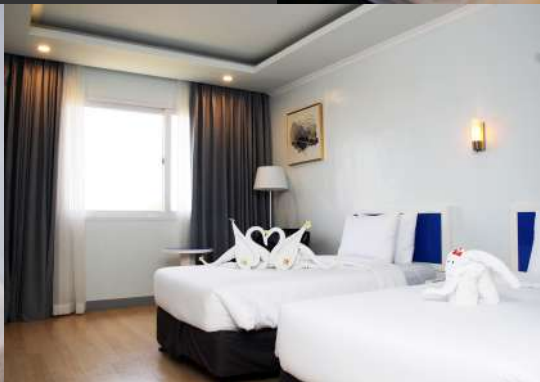
HOTEL ROOM

Clean and comfortable rooms, a cozy and safe environment

DELUXE ROOM

Good for two/three persons
25sqm, 2/3 Single beds or Queen bed

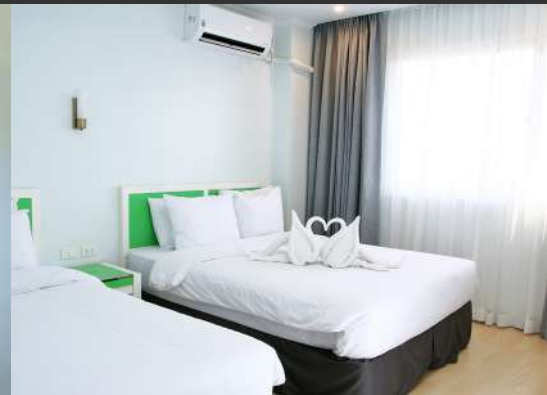
Includes a sofa, Table, Mini-fridge, TV,
Storage cabinet, Inverter air conditioner
Equipped with premium mattresses and bedding,
Towels, Coffee pot, Safe, Shoe rack,
Hair dryer and amenities provided/refilled



FAMILY ROOM

Good for four/five/six persons
48sqm, 2/3 queen beds, Spacious living room,
Separate bedroom

Includes a Sofa, Table, Mini-fridge, TV,
Storage cabinet, Inverter air conditioner,
Equipped with premium mattresses and bedding,
Towels, Coffee pot, Safe, Shoe rack,
Hair dryer and Amenities provided/refilled

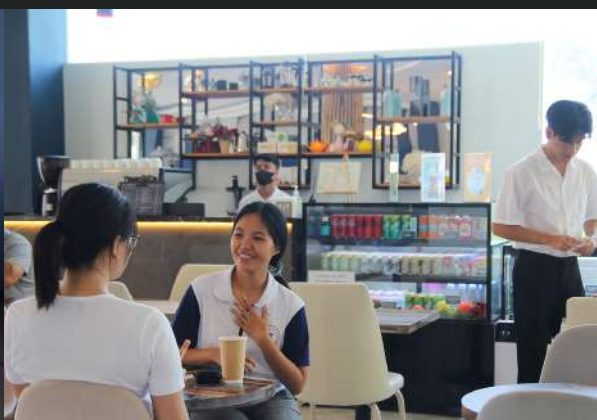


HOTEL SERVICE

Premium English program with friendly and comprehensive services

In the hotel, there are abundant opportunities to use English in everyday situations, and communication with hotel staff can enhance practical English skills in real-life scenarios. Furthermore, specialized staff assigned to different departments prioritize students' convenience and safety. This serves as a unique distinguishing factor of the English training provided at the hotel.

- **Hotel Amenities:** Provides toothbrushes, toothpaste, shampoo, conditioner, body wash, soap, bottled water, tissues, and instant tea bags, and refills upon request.
- **Towel Replacement Service:** Replace towels daily with clean ones.
- **Cleaning Service:** Provides room cleaning and tidying twice a week to assist guests' convenience.
- **Bedding Replacement:** Offers a weekly full bedding replacement service.
- **Laundry Service:** Provides laundry service three times a week. (e.g., drop off on Monday, pick up on Wednesday)
- **Rental Service:** Offers air purifiers and fans for rent according to students' needs.
- **Food and Beverage:** Provides various food and beverages through our restaurant, rooftop bar, and cafe.
- **Fitness Facilities:** Offers facilities for relaxation and exercise, including a swimming pool, gym, and spa.
- **Concierge Service:** Provides various assistance such as travel and tourist information, reservations, and taxi calling.
- **Pool Lifeguard:** To ensure students' safety, lifeguards are stationed during pool operating hours (09:00-22:00) and offer rentals such as towels, goggles, and kick-boards.
- **Security Guard:** Security guards are stationed 24/7 to ensure safety inside the hotel and its surroundings and respond to emergencies.
- **Free Wi-Fi:** Offers wireless Internet for guests to conveniently use the Internet.
- **110V, 220V Common Use:** Voltage converters are not needed.
- **Shine Spa & Massage:** Enjoy relaxing massages at special discounted rates for Joyful students within the hotel.



ESL

1:1 CLASS
4 times (180mins)

1:4 CLASS
2 times (90mins)

Traning
EACH SKILL

Various
ACTIVITIES

Shortest Period Maximum Effectiveness

ESL course aims to improve your overall English skills.

Through 1:1 close care, you can expect maximum results in the shortest amount of time from basic to advanced English, and all areas are taught through personalized classes with a teacher.

In 1:4 group classes, discussions are held on a variety of topics under the systematic management of a dedicated teacher, providing an opportunity to maximize your English communication skills.



CURRICULUM

ESL	
06:30-10:00	BREAKFAST
08:40-09:25	1:1 Start-up A
09:30-10:15	1:1 Start-up A
10:25-11:10	1:4 Discussion
11:15-12:00	1:4 Discussion
11:30-13:00	LUNCH
13:00-13:45	1:1 Start-up B
13:50-14:35	1:1 Start-up B
14:45-15:30	Special Class
15:35-16:20	
16:30-17:15	
17:20-18:05	
18:00-19:00	DINNER
19:00-19:45	Joyful Evening Club
19:50-20:35	



SMART 4 SKILLS

Writing, Reading, Speaking, Listening

JOYFUL SKILLS

Group class

★ Golf/Yoga - Local registration and Payment

SMART 4 SKILLS

Writing, Reading, Speaking, Listening

LEARN & FUN

Yoga, Golf, Music, Pattern English

★ 1:1 class can be added (additional charge)

ADDITIONAL JOY

English Diary, Writing by Topic

LEVEL SYSTEM

CAMBRIDGE LEVEL		SCALE
C2	Proficiency	200-230
C1	Advanced	180-200
B2	Upper-Intermediate	160-180
B1	Intermediate	140-160
A2	Pre-Intermediate	120-140
A1	Beginner	100-120
PRE A1	Starter	0-100

Textbooks

- Pearson Start-up
- Speakout

Contents

- Reading, Writing, Listening, Speaking
- Special Class
 - Yoga, Golf, Music, Pattern English
 - Shopping Mall: Free shuttle service (once daily)

INCLUDED	Admission fee, Tuition, Hotel room, Meals, Hotel amenity, Laundry, Housekeeping
NOT INCLUDED	Management fees, Airport pick-up/drop-off, Visa extension fees, SSP, Airfare, Travel insurance, Outdoor activities

ESL LIGHT

1:1 CLASS
4 times (180mins)

FOR ALL AGE
Groups

CUSTOMIZED
Lessons

Various
ACTIVITY

Relaxation and English learning at the same time!

ESL LIGHT course provides the perfect opportunity to learn English while enjoying relaxation at the hotel. You can enjoy activities such as yoga, golf lessons/rounding, massages, and swimming before and after English classes to relax and recharge. Joyful Education provides shuttle service for external activities to ensure students' safety and convenience.

All classes are conducted one-on-one, focusing on the four core areas of language learning. Students receive customized lessons tailored to their level, allowing them to participate in classes without stress regardless of age, and naturally acquire English skills to enjoy English in daily life.



CURRICULUM

ESL LIGHT	
06:30-10:00	BREAKFAST
08:40-09:25	1:1 Start-up A
09:30-10:15	1:1 Start-up A
10:25-11:10	1:1 Start-up B
11:15-12:00	1:1 Start-up B
11:30-13:00	LUNCH
13:00-13:45	Free Time
13:50-14:35	
14:45-15:30	
15:35-16:20	
16:30-17:15	
17:20-18:05	
18:00-19:00	DINNER
19:00-19:45	Joyful Evening Club
19:50-20:35	



★ 1:1 lesson scheduled for four sessions in the morning

SMART 4 SKILLS
Writing, Reading, Speaking, Listening

★ Golf/Yoga - Local registration and Payment

ENJOY & RELAX
Golf, Yoga, Massage,
Shopping Malls, Swimming

★ 1:1 class can be added (additional charge)

ADDITIONAL JOY
English Diary, Writing by Topic

LEVEL SYSTEM

CAMBRIDGE LEVEL		SCALE
C2	Proficiency	200-230
C1	Advanced	180-200
B2	Upper-Intermediate	160-180
B1	Intermediate	140-160
A2	Pre-Intermediate	120-140
A1	Beginner	100-120
PRE A1	Starter	0-100

Textbooks

- Pearson Start-up
- Speakout

Contents

- Reading, Writing, Listening, Speaking
- Daily Activity
 - Golf Lessons/Rounding, Yoga, Massage : additional charge
 - Shopping Mall: Free shuttle service : once daily

INCLUDED	Admission fee, Tuition, Hotel room, Meals, Hotel amenity, Laundry, Housekeeping
NOT INCLUDED	Management fees, Airport pick-up/drop-off, Visa extension fees, SSP, Airfare, Travel insurance, Outdoor activities

ESL CAREERLINK

1:1 CLASS
4 times (180mins)

ENGLISH SKILL
Care

HOTEL
Practical Learning

Hotel Internship
CERTIFICATE

Throughout your English learning journey, seize the unique chance for a hotel internship.

ESL CareerLink program aims to enhance English proficiency from basic to advanced levels. With the distinctive feature of Joyful Education, studying while staying at a hotel, it is designed to provide opportunities to gain practical hotel experience and receive relevant certificates. This program takes place at the T-SHINE Hotel where Joyful Education is located, and it is open to non-majors and majors alike. Improve your English communication skills through various experiences at the hotel while studying English, and enhance your competitiveness in the job market by participating in real-world tasks alongside professionals. An internship certificate is a bonus!



CURRICULUM

ESL CAREERLINK	
06:30-10:00	BREAKFAST
08:40-09:25	1:1 Start-up A
09:30-10:15	1:1 Start-up A
10:25-11:10	Hotel Internship
11:15-12:00	Hotel Internship
11:30-13:00	LUNCH
13:00-13:45	Hotel Internship
13:50-14:35	Hotel Internship
14:45-15:30	1:1 Start-up B
15:35-16:20	1:1 Start-up B
16:30-17:15	Daily Activity
17:20-18:05	
18:00-19:00	DINNER
19:00-19:45	Joyful Evening Club
19:50-20:35	



- SMART 4 SKILLS**
Writing, Reading, Speaking, Listening
- Hotel Management**
Practical Experience
★ Golf/Yoga - Local registration and Payment
- Hotel Management**
Practical Experience
- SMART 4 SKILLS**
Writing, Reading, Speaking, Listening
- Enjoy & Rest**
Golf, Yoga, Massage, Shopping mall
★ 1:1 class can be added (additional charge)
- ADDITIONAL JOY**
English Diary, Writing by Topic

LEVEL SYSTEM

CAMBRIDGE LEVEL		IELTS
C2	Proficiency	8.0-9.0
C1	Advanced	7.0-7.5
B2	Upper-Intermediate	6.0-6.5
B1	Intermediate	4.0-5.5
A2	Pre-Intermediate	0-3.5
A1	Beginner	-
PRE A1	Starter	-

Textbooks

- Pearson Start-up
- Speakout

Contents

- Reading, Writing, Listening, Speaking
- Hotel Internship
- Daily Activity
 - Golf Lessons/Rounding, Yoga, Massage : additional charge
 - Shopping Mall: Free shuttle service : once daily

INCLUDED	Admission fee, Tuition, Hotel room, Meals, Hotel amenity, Laundry, Housekeeping
NOT INCLUDED	Management fees, Airport pick-up/drop-off, Visa extension fees, SSP, Airfare, Travel insurance, Outdoor activities

5 STRENGTHS



English Program

Helps enhance English skills necessary for hotel work, based on everyday English



Practical Experience

Students can gain hands-on experience by working in various departments of the hotel.



Cultural Exchange

Learn and share cultures with students from various nationalities, forming an international network of relationships.



Networking

Provides an excellent opportunity to network with professionals within the hotel industry, potentially leading to future job opportunities.



Internship Certificate

It can serve as a unique credential even for non-majors and can be helpful for those seeking employment in related industries.



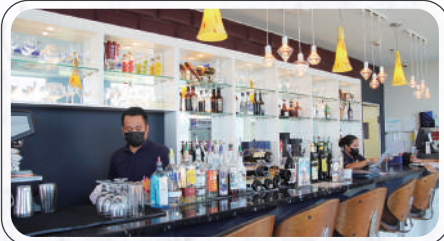
Front Desk Training

- Introduction to basic principles and processes
- Learning procedures for room reservation, check-in, and check-out
- Practice scenarios for customer service and problem-solving
- Learning scenarios for reservation confirmation, payment processing, and room change



Room Service Training

- Introduction to types and processes
- Learning tasks such as room cleaning, room service, and facility maintenance
- Practice scenarios for reporting room status, handling requests, and managing customer feedback
- Practice scenarios for problem-solving



Food and Beverage Service Training

- Introduction to types and processes
- Learning tasks such as taking orders, serving, and processing payments
- Practice scenarios for customer service and handling order changes
- Learning scenarios for menu description, recommendations, and handling special requests



Hotel Facility Management and Operations Training

- Introduction to types of tasks and their importance
- Learning tasks such as facility maintenance, safety procedures, and facility reservations
- Practice scenarios for problem-solving and handling emergency situations
- Learning English conversation skills necessary for facility management



POWER SPEAKING

1:1 CLASS
6 times (270mins)

1:4 CLASS
2 times (90mins)

SPEAKING
specialized

Maximum
EFFICIENCY

DRAMATIC IMPROVEMENT IN SPEAKING

Power Speaking course aims to dramatically improve your speaking skills. 1:1 classes are held for 45 minutes in each area to learn essential speaking skills, and speaking-specific classes (Pronunciation, Accent, Fluency) are held for an additional 90 minutes. With this program, students can expect maximum results in a short period of time.

In 1:4 group classes, discussions are held on a variety of topics under the systematic management of a dedicated teacher, providing an opportunity to maximize your English communication skills.



CURRICULUM

POWER SPEAKING	
06:30-10:00	BREAKFAST
08:40-09:25	1:1 Start-up A
09:30-10:15	1:1 Start-up A
10:25-11:10	1:1 power Speaking
11:15-12:00	1:1 power Speaking
11:30-13:00	LUNCH
13:00-13:45	1:1 Speakout B
13:50-14:35	1:1 Speakout B
14:45-15:30	Special Class
15:35-16:20	
16:30-17:15	1:4 Discussion
17:20-18:05	1:4 Discussion
18:00-19:00	DINNER
19:00-19:45	Joyful Evening Club
19:50-20:35	



SMART 4 SKILLS
Writing, Reading, Speaking, Listening

SMART 4 SKILLS
Writing, Reading, Speaking, Listening

SMART 4 SKILLS
Writing, Reading, Speaking, Listening

LEARN & FUN
Music, Pattern English, Survival English

JOYFUL SKILLS
Group Class

★ 1:1 class can be added (additional charge)

ADDITIONAL JOY
English Diary, Writing by Topic

LEVEL SYSTEM

CAMBRIDGE LEVEL		SCALE
C2	Proficiency	200-230
C1	Advanced	180-200
B2	Upper-Intermediate	160-180
B1	Intermediate	140-160
A2	Pre-Intermediate	120-140
A1	Beginner	100-120
PRE A1	Starter	0-100

Textbooks

- Pearson Start-up
- Speakout
- Empower Speaking

Contents

- Reading, Writing, Listening, Speaking
- Power Speaking
 - Pronunciation, Accent, Fluency
- Discussion
- Special Class
 - Music, Pattern English, Survival English

INCLUDED	Admission fee, Tuition, Hotel room, Meals, Hotel amenity, Laundry, Housekeeping
NOT INCLUDED	Management fees, Airport pick-up/drop-off, Visa extension fees, SSP, Airfare, Travel insurance, Outdoor activities

TOEIC SPEAKING

1:1 CLASS
6 times (270mins)

1:4 CLASS
2 times (90mins)

TOEIC SPEAKING
Preparation

**SPEAKING
SPECIALIZED**

PREPARE TOEIC SPEAKING TEST

TOEIC Speaking course is designed to build a solid foundation and prepare you for the TOEIC speaking test.

1:1 classes are held for 45 minutes in each area (Reading/Listening/Writing/Speaking) to learn essential speaking skills, and TOEIC SPEAKING classes are held for an additional 90 minutes. This course is designed to help students improve their overall English skills as well as prepare for exams. In 1:4 group classes, discussions are held on a variety of topics under the systematic management of a dedicated teacher, providing an opportunity to maximize your English communication skills.



CURRICULUM

TOEIC SPEAKING	
06:30-10:00	BREAKFAST
08:40-09:25	1:1 TOEIC Speaking
09:30-10:15	1:1 TOEIC Speaking
10:25-11:10	1:4 Discussion
11:15-12:00	1:4 Discussion
11:30-13:00	LUNCH
13:00-13:45	1:1 Speakout A
13:50-14:35	1:1 Speakout A
14:45-15:30	Special Class
15:35-16:20	
16:30-17:15	1:1 Speakout B
17:20-18:05	1:1 Speakout B
18:00-19:00	DINNER
19:00-19:45	Joyful Evening Club
19:50-20:35	



- SPEAKING PLUS**
TOEIC exam preparation
- JOYFUL SKILLS**
Group class
- SMART 4 SKILLS**
Writing, Reading, Speaking, Listening
- LEARN & FUN**
Music, Pattern English, Survival English
- SMART 4 SKILLS**
Writing, Reading, Speaking, Listening
- ★ 1:1 class can be added (additional charge)
- ADDITIONAL JOY**
English Diary, Writing by Topic

LEVEL SYSTEM

CAMBRIDGE LEVEL		TOEIC SPEAKING
C2	Proficiency	-
C1	Advanced	LEVEL 8
B2	Upper-Intermediate	LEVEL 7
B1	Intermediate	LEVEL 6
A2	Pre-Intermediate	LEVEL 5
A1	Beginner	LEVEL 3-4
PRE A1	Starter	-

Textbooks

- Pearson Start-up
- Speakout
- TOEIC Speaking

Contents

- Reading, Writing, Listening, Speaking
- TOEIC Speaking
- Discussion
- Special Class
 - Music, Pattern English, Survival English

INCLUDED	Admission fee, Tuition, Hotel room, Meals, Hotel amenity, Laundry, Housekeeping
NOT INCLUDED	Management fees, Airport pick-up/drop-off, Visa extension fees, SSP, Airfare, Travel insurance, Outdoor activities

IELTS SPEAKING

1:1 CLASS
6 times (270mins)

1:4 CLASS
2 times (90mins)

IELTS SPEAKING
Preparation

Weekly
MOCK EXAM

MAXIMIZE YOUR ENGLISH COMMUNICATION SKILLS

This is for students who want to learn IELTS speaking while studying basic English by combining IELTS Speaking, or for students preparing for the IELTS test who have particular difficulties with speaking skills. This course includes 45 minutes of 1:1 classes in each area to learn essential speaking skills and an additional 90 minutes of IELTS SPEAKING classes to improve your overall English skills and prepare for the exam. In 1:4 group classes, discussions are held on a variety of topics under the systematic management of a dedicated teacher, providing an opportunity to maximize your English communication skills.



CURRICULUM

IELTS SPEAKING	
06:30-10:00	BREAKFAST
08:40-09:25	1:1 Speakout A
09:30-10:15	1:1 Speakout A
10:25-11:10	1:4 Discussion
11:15-12:00	1:4 Discussion
11:30-13:00	LUNCH
13:00-13:45	1:1 IELTS Speaking
13:50-14:35	1:1 IELTS Speaking
14:45-15:30	Special Class
15:35-16:20	
16:30-17:15	1:1 Speakout B
17:20-18:05	1:1 Speakout B
18:00-19:00	DINNER
19:00-19:45	Joyful Evening Club
19:50-20:35	



SMART 4 SKILLS
Writing, Reading, Speaking, Listening

JOYFUL SKILLS
Group class

SPEAKING PLUS
IELTS exam preparation

LEARN & FUN
Music, Pattern English, Survival English

SMART 4 SKILLS
Writing, Reading, Speaking, Listening

★ 1:1 class can be added (additional charge)

ADDITIONAL JOY
English Diary, Writing by Topic

LEVEL SYSTEM

CAMBRIDGE LEVEL		IELTS
C2	Proficiency	8.0-9.0
C1	Advanced	7.0-7.5
B2	Upper-Intermediate	6.0-6.5
B1	Intermediate	4.0-5.5
A2	Pre-Intermediate	0-3.5
A1	Beginner	-
PRE A1	Starter	-

Textbooks

- Pearson Start-up
- Speakout
- IELTS Speaking

Contents

- Reading, Writing, Listening, Speaking
- IELTS Speaking
- Discussion
- Special Class
 - Music, Pattern English, Survival English

INCLUDED	Admission fee, Tuition, Hotel room, Meals, Hotel amenity, Laundry, Housekeeping
NOT INCLUDED	Management fees, Airport pick-up/drop-off, Visa extension fees, SSP, Airfare, Travel insurance, Outdoor activities

TARGET IELTS

1:1 CLASS
6 times (270mins)

1:4 CLASS
2 times (90mins)

SYSTEMATIC TEST
preparation course

Weekly
MOCK EXAM

EXPECT MAXIMUM RESULTS

Joyful Education's IELTS course offers one-on-one classes to systematically prepare for the test and improve test takers' weaknesses as quickly as possible. By taking advantage of 1:1 classes, you can deal with many questionnaires and exchange feedback on them with your teacher. 1:1 classes focus on Reading/Writing/Speaking skills that require intensive care.

In the 1:4 class, you will learn the subject of Listening.



CURRICULUM

TARGET IELTS	
06:30-10:00	BREAKFAST
08:40-09:25	1:1 IELTS Reading
09:30-10:15	1:1 IELTS Reading
10:25-11:10	1:4 IELTS Listening
11:15-12:00	1:4 IELTS Listening
11:30-13:00	LUNCH
13:00-13:45	1:1 IELTS Speaking
13:50-14:35	1:1 IELTS Speaking
14:45-15:30	Special Class
15:35-16:20	
16:30-17:15	1:1 IELTS Writing
17:20-18:05	1:1 IELTS Writing
18:00-19:00	DINNER
19:00-19:45	Joyful Evening Club
19:50-20:35	



- IELTS READING PLUS**
IELTS Exam Preparation
- IELTS LISTENING PLUS**
IELTS Exam Preparation
- IELTS SPEAKING PLUS**
IELTS Exam Preparation
- LEARN & FUN**
Music, Pattern English, Survival English
- IELTS WRITING PLUS**
IELTS Exam Preparation
- ★ 1:1 class can be added (additional charge)
- ADDITIONAL JOY**
English Diary, Writing by Topic

LEVEL SYSTEM

CAMBRIDGE LEVEL		IELTS
C2	Proficiency	8.0-9.0
C1	Advanced	7.0-7.5
B2	Upper-Intermediate	6.0-6.5
B1	Intermediate	4.0-5.5
A2	Pre-Intermediate	0-3.5
A1	Beginner	-
PRE A1	Starter	-

Textbooks

- IELTS textbook for each skill

Contents

- Reading, Writing, Listening, Speaking
- Special Class
 - Music, Pattern English, Survival English

INCLUDED	Admission fee, Tuition, Hotel room, Meals, Hotel amenity, Laundry, Housekeeping
NOT INCLUDED	Management fees, Airport pick-up/drop-off, Visa extension fees, SSP, Airfare, Travel insurance, Outdoor activities

FAMILY PROGRAM

JUNIOR 1:1
6 times (270mins)

PARENTS 1:1
2 times (90mins)

Varous
ACTIVITIES

Training
FOR EACH SKILL

HARMONY OF ENGLISH STUDY AND ACTIVITIES

As a specialized family training center, we offer a Cambridge program for children and selected textbooks to help parents improve their conversation skills. This program consists of only 1:1 classes and is tailored to the individual student. It is prepared to thoroughly study and learn the textbook, and 1:1 classes for parents are also designed to improve speaking skills with the highest efficiency in a short period of time.

Parents who do not wish to take classes can transfer 1:1 classes to their children and provide guidance on leisure activities such as going to the shopping mall, yoga, or golf classes.



CURRICULUM

FAMILY PROGRAM	
06:30-10:00	BREAKFAST
08:40-09:25	1:1 Cambridge Prepare A
09:30-10:15	1:1 Cambridge Prepare A
10:25-11:10	1:1 Cambridge Prepare B
11:15-12:00	1:1 Cambridge Prepare B
11:30-13:00	LUNCH
13:00-13:45	Daily Activity
13:50-14:35	
14:45-15:30	Free Time
15:35-16:20	
16:30-17:15	1:1 Cambridge Prepare C
17:20-18:05	1:1 Cambridge Prepare C
18:00-19:00	DINNER
19:00-19:45	Joyful Evening Club
19:50-20:35	

JUNIOR

SMART 4 SKILLS
Writing, Reading, Speaking, Listening

SMART 4 SKILLS
Writing, Reading, Speaking, Listening

LEARN & FUN
Swimming, Storytelling, Music, Art, Movie

SMART 4 SKILLS
Writing, Reading, Speaking, Listening

★ 1:1 class can be added (additional charge)

ADDITIONAL JOY
English Diary, Writing by Topic

LEVEL SYSTEM

CAMBRIDGE LEVEL	SCALE
C2	Proficiency -
C1	Advanced -
B2	Upper-Intermediate First for Schools
B1	Intermediate Preliminary for Schools
A2	Pre-Intermediate Flyers/Key for Schools
A1	Beginner Mover
PRE A1	Starter Starter

Textbooks

- Cambridge YLE
- Cambridge Prepare

Contents

- Reading, Writing, Listening, Speaking
- Daily Activity
- Swimming, Storytelling, Music, Art, Movie



CURRICULUM

FAMILY PROGRAM	
06:30-10:00	BREAKFAST
08:40-09:25	1:1 Start-Up
09:30-10:15	1:1 Start-Up
10:25-11:10	Daily Activity
11:15-12:00	
11:30-13:00	LUNCH
13:00-13:45	1:4 Discussion
13:50-14:35	1:4 Discussion
14:45-15:30	Free Time
15:35-16:20	
16:30-17:15	
17:20-18:05	
18:00-19:00	DINNER

PARENTS

SMART 4 SKILLS
Writing, Reading, Speaking, Listening

ENJOY & REST
Yoga, Massage

★ Golf/Yoga - Local registration and Payment

TOPIC TALK
Group Discussion

ENJOY & REST
Golf, Yoga, Massage,
Shopping Malls, Swimming

★ 1:1 class can be added (additional charge)

LEVEL SYSTEM

CAMBRIDGE LEVEL	SCALE
C2	Proficiency 200-230
C1	Advanced 180-200
B2	Upper-Intermediate 160-180
B1	Intermediate 140-160
A2	Pre-Intermediate 120-140
A1	Beginner 100-120
PRE A1	Starter 0-100

Textbooks

- Pearson Start-up
- Speakout

Contents

- Reading, Writing, Listening, Speaking
- Daily Activity
- Golf, Yoga, Massage, Shopping Malls, Swimming

	Regular Program (Mar.-Jun. / Sep.-Dec.)	Camp Program (Jul.-Aug. / Jan.-Feb.)
INCLUDED	Admission fee, Tuition, Hotel room, Meals, Hotel amenity, Laundry, Housekeeping	Admission fee, Tuition, Hotel room, Meals, Hotel amenity, Management fees, Housekeeping, Airport pick-up/drop-off, Laundry, Visa extension fees(within the training period), SSP
NOT INCLUDED	Management fees, Airport pick-up/drop-off, SSP, Visa extension fees(within the training period), Airfare, Travel insurance, Outdoor activities	Airfare, Travel insurance, Outdoor activities

ACTIVITY SCHEDULE

MON, WED, FRI

GOLF LESSON

- 1 hour class 3 times a week (3 hours in total)
- 1 golf instructor for every 3 students
- Included : equipment(sharing), transportation
 - Not Included : Personal items (golf shoes, gloves, clothing, etc.)

WED

SPECIAL EVENT DAY

(Family Program Exclusive Activities)

- QuizBEE
- National flag day
- Superhero day
- Career day

SUN

MARINE SPORTS

- Trial scuba diving, Jet ski, Banana boat, etc.

TUE, THU

OUTDOOR FIELD TRIP

(Family Program Exclusive Activities)

- Philippine History 1
 - Church of Santo Nino
 - Casagorordo Museum
 - Magellan's Cross
- Philippine History 2
 - Fort San Pedro
 - Philippines National Museum
- Ocean Park Aquarium

SAT

ISLAND HOPPING

- Week 1, Week 3
 - Island Hopping
- Week 2, Week 4
 - Oslob Whale Shark Tour

RESORT DAY TOUR

- Plantation Resort & Spa

※ Schedule and cost may change depending on local circumstances.
(Local registration and Payment)

JOYFUL ACTIVITY

ENJOY & RELAX

	GOLF LESSON	ROUND OF GOLF	YOGA
Content	An opportunity to learn English and golf lessons together and enjoy! Beginner lessons make it easy for newcomers to start without pressure.	Enjoying a special golf game on the open course while breathing in clean air and admiring the clear sky.	Daily activity that focuses the body and mind to relieve stress and provides both aerobic and strength exercises for effective weight loss.
Participants	Team composition (1 pro coach + 3 students)		Maximum 15 participants per class
Schedule	3 sessions per week, 1 hour each (total of 3 hours)		5 sessions per week, 1 hour each
Inclusions	Equipment (sharing), transportation		Yoga mats, transportation provided
Preparations	Personal items (gloves, clothing, golf shoes)		Personal items (yoga attire and towels needed)
Remarks	 <ul style="list-style-type: none"> ※ Lessons conducted by a pro golfer ※ Use of outdoor golf practice range 		<ul style="list-style-type: none"> ※ Direct registration and payment at the golf club affiliated with the hotel

WATER SPORTS

	ISLAND HOPPING	MARINE SPORTS	OSLOB DAY TOUR
Content	Experience a delightful time on board using Joyful's exclusive boat and directly explore the clean and clear tropical sea!	A set of three marine sports activities representing the details of the area - exciting activities in the beautiful sea!	Get a once-in-a-lifetime opportunity for a life shot with the majestic whale shark!
Participants	Approximately 25 participants	5 to 12 participants	5 to 10 participants
Schedule	13:00~17:00	13:00~16:00	04:00~17:00
Inclusions	Snacks, fruits, beverages, beer, towels, snorkeling equipment	Banana boat, snorkeling, jet skiing	Breakfast, Lunch, Beverages, Entrance fees, Tour costs
Preparations	Personal items (Tubes, goggles, sunscreen, etc.)	Personal items (Tubes, goggles, sunscreen, etc.)	Swim wear, Snorkeling gear for children required
Remarks	<ul style="list-style-type: none"> ※ Wearing aqua shoes recommended ※ Wear swim wear before departure, shower after returning to the hotel 	<ul style="list-style-type: none"> ※ Participation available from age 10 ※ Wear swim wear before departure, shower after returning to the hotel 	<ul style="list-style-type: none"> ※ Subject to cancellation depending on the situation on the day ※ Conducted by an external travel agency

※ Transportation is provided for outdoor activities.

RESORT DAY TOUR

PLANTATION BAY RESORT	
Content	 Plantation Bay is a 5-star resort popular for its various types of spacious swimming pools, beachfront, gardens, shooting range, paddleboarding, kayaking, and stunning scenery. Conveniently located approximately 7 minutes by car from Joyful Education Center.
Participants	20 to 40 participants Schedule 09:00~17:00 Preparations Personal items (Tubes, goggles, sunscreen, etc.)
Inclusions	Day trip voucher, towels, resort lunch, rock climbing, ping pong, 30-minute bicycle rental, 15-minute use of paddle boat/kayak
Remarks	※ No accompanying guide

FAMILY PROGRAM

	PHILIPPINES HISTORY	OCEAN PARK	SWIMMING CLASS
Content	Sto. Nino, Casa Gorordo Museum, Magellan's Cross, San Pedro Fort, National Museum of the Philippines.	Visit to the only large-scale aquarium in Cebu and bird show.	From kicking to strokes, special coaching by a Korean swimming instructor.
Participants	5 to 30 participants	5 to 30 participants	5 to 15 participants
Schedule	13:00~16:00 (Instead of afternoon classes)	13:00~16:00 (Instead of afternoon classes)	3 times a week, 1 hour each (after dinner)
Inclusions	Beverages, Snacks, Entrance fees	Beverages, Snacks, Entrance fees, Doctor fish	Towel, kickboard
Preparations	Group T-shirts (upon registration)	Group T-shirts (upon registration)	Personal items such as goggles needed
Remarks	※ Subject to cancellation in case of inclement weather	※ Subject to cancellation depending on the aquarium's situation.	※ Subject to change/cancellation due to personal circumstances of the instructor.

※ Participation is limited to participants of the family program. Transportation will be provided for external activities.

SHUTTLE BUS SCHEDULE

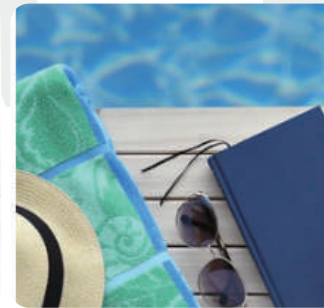
Regular Program (Mar.-Jun., Sep.-Dec.)				Camp Program (Jul.-Aug., Jan.-Feb.)			
Date	Hotel Departure	Location	Departure from Mall	Date	Hotel Departure	Location	Departure from Mall
Mon	15:30	Shang's Mall	17:00	Mon	08:40/15:30	Shang's Mall	10:00/17:00
Tue	15:30	SM Seaside Mall	17:30	Tue	09:40/15:00	SM Seaside Mall	11:30/17:30
Wed	15:30	Newtown LG Garden	17:00	Wed	08:40/15:00	Newtown LG Garden	09:50/17:00
Thu	15:30	Shang's Mall	17:30	Thu	09:40/15:00	SM Seaside Mall	11:30/17:30
Fri	15:30	Newtown LG Garden	17:00	Fri	08:40/05:30	Shang's Mall	10:00/17:00
Sat	13:00	SM Seaside Mall	17:00	Sat	12:00	SM Seaside Mall	15:30
Sun	12:00	SM Seaside Mall	17:00	Sun	10:00	SM Seaside Mall	14:30

※ All activities/shuttle services are to be requested and paid for locally in Cebu.

※ The schedule and cost of all activities/shuttle services are subject to change/cancellation depending on the local situation.



CHECK LIST



PREPARATION

1. Passport valid for at least 6 months
2. Round-trip airline tickets
3. E-Travel QR Code issuance (free)
 - Can be completed 72 hours before departure (etravel.gov.ph)
4. English family relationship certificate (issued to show all family members' names), recommended international traveler's insurance certificate
5. Cash (USD) and a credit card for emergency use
6. Photos for Visa (2x2 inches)
7. Notebook and stationery
8. Clothing (avoid bringing luxury items) and toiletries
9. Other necessities - swimwear, sunglasses, first aid kit, etc.

HOTEL CHECKLIST

1. Check-in: 2:00 PM / Check-out: 11:00 AM (Luggage storage available at the hotel front desk after check-out)

- ex) Student checking in on Saturday (based on departure date)
- Check-in: Saturday from 2:00PM / Check-out: Saturday until 11:00AM

※ Changes to check-in/check-out times: Expected to change according to standard hotel regulations (Effective date: January 1, 2025)

ex) Based on departure date

- Check-in: Sunday from 2:00PM / Check-out: Saturday until 11:00AM
- Check-in: Saturday from 2:00PM / Check-out: Friday until 21:00PM
- Check-in: Friday from 2:00PM / Check-out: Thursday until 21:00PM

(If student check-in on a Friday due to a personal reason, student can apply for an additional night and check out on Friday until 21:00PM)

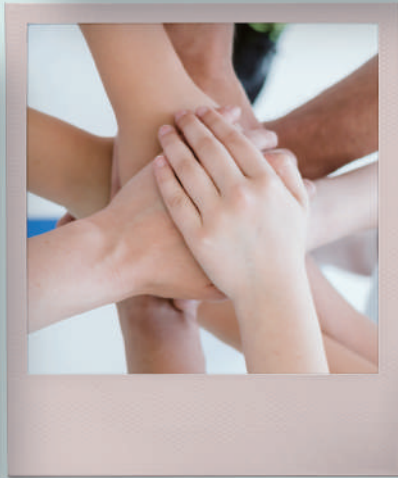
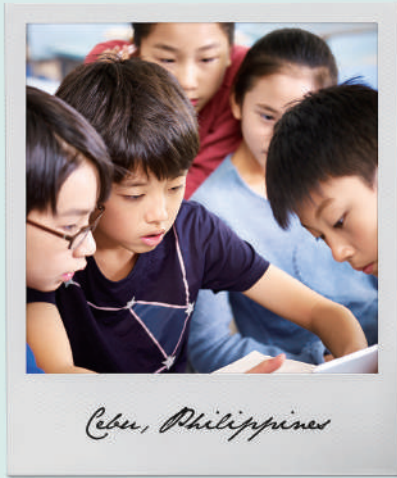
1-1. Late check-out: PHP 1,000 per room, includes lunch/dinner, advance reservation required
(subject to availability, room relocation may be necessary)

2. Additional stay (includes 3 meals per day, Laundry Service)

- Double room PHP 3,000 / Triple room PHP 4,000 / Quadruple room PHP 6,000

3. Family visit (includes meals, laundry)

- Available only if there is vacancy at the time of application
- Families of students enrolled for 3 to 8 weeks: Allowed up to 2 weeks (13 nights, 14 days)
- Families of students enrolled for less than 2 weeks: Allowed up to 1 week (6 nights, 7 days)
- Additional costs:
 - Extra bed (same room): PHP 2,000
 - Additional room: 1-2 persons PHP 3,000 / 3 persons PHP 4,000
 - Airport pick-up/drop-off: PHP 1,000 per team (one-way cost)



Joyful Premium Center Regulations

[General Regulations]

1. Name
The official name of this academy is JOYFUL EDU.
2. Internal Agreement
All students of JOYFUL EDU (hereinafter referred to as JOYFUL) must sign an agreement form before the start of the course. The signature is considered as agreement to all academic and hotel room regulations of JOYFUL.
3. General rules
JOYFUL targets adult students aged 18 and above or minors registered with a guardian. The training life is conducted freely within the rules set by JOYFUL.
Students must personally enroll in study abroad insurance or traveler's insurance in their country before departure to prepare for safety incidents during the training period. JOYFUL is not responsible for damages incurred in the absence of insurance coverage.
4. Refund Procedure after Expulsion
In the event of a student's improper behavior leading to expulsion from the center, no refund will be processed.
5. Termination of Responsibility
The academy's responsibility ends upon the completion of the student's training period.

[Education Center Regulations]

Article 1. Registration and Course Extension

1. The admission registration fee at the time of application is 100USD and is non-refundable after confirmation of registration.
2. Within 5 days of admission application (excluding legal holidays), an enrollment confirmation letter (invoice) will be sent. Tuition fees and hotel room costs for the registered period must be fully paid by 2 weeks before admission. Even after departure, if the tuition is not paid, the academy can suspend the student's classes according to the contract between the language school and the study abroad agency. The language school is not obligated to notify the student of unpaid situations.
3. The minimum registration period for JOYFUL EDU is 1 week for individuals and 4 weeks for the family program.
4. If you wish to extend your training during JOYFUL, you must submit an application form for extension 2 weeks before the extension starts, and the payment must be completed by 1 week before. Otherwise, it will be automatically canceled in terms of instructors, classes, and hotel room assignments.
5. Changes to the departure date before starting training are allowed once, and a change fee of 100USD will be charged from the second change onwards. However, this excludes changes in hotel room occupancy and training period.
6. Tuition fees cannot be carried over or transferred.
7. For re-registration, the admission fee of 100USD will be waived.

Article 2. Refund Policy

1. Before Departure:
 - a) The registration fee (including the deposit for family programs, family camps, and junior camps) is non-refundable under any circumstances.
 - b) If cancellation is requested at least 2 weeks before the scheduled departure date, the amount paid will be refunded (excluding registration fees and deposits according to regulation "a").
 - c) Cancellation between 13 days and 4 days before the scheduled departure date will result in a refund, excluding tuition fees and 1 week of hotel room costs (same applies as in regulation "a").
 - d) Cancellation between 3 days and the scheduled departure date will result in a refund, excluding tuition fees for 1 week and hotel room costs for 1 week (same applies as in regulation "a").
 - e) If the departure date is changed or postponed after registration, the refund policy will be applied based on the initially scheduled departure date.
 - f) JOYFUL is aimed at adult students aged 18 and above or minors enrolled with their guardians. The training program is conducted freely within the rules set by JOYFUL, and students must enroll in student insurance or traveler's insurance in their country before departure to prepare for any accidents that may occur during the training period. JOYFUL bears no responsibility for damages incurred due to lack of insurance coverage.
2. After Departure:
 - a) If cancellation is requested immediately upon arrival, 50% of the paid tuition fees and hotel room costs will be refunded.
 - b) Refund requests are only possible every 4 weeks after the course commencement, with 50% of the remaining costs refunded.
 - c) All refund processes take approximately 4 weeks (subject to the agreement of the academy, local payments may be possible).
 - d) Changing the occupancy of a hotel room incurs a fee of 1,000pesos. If changing to a room with a lower cost, 50% of the price difference will be refunded.
3. Changes or cancellations after the course commencement must be requested in writing.
4. If absent from classes for 3 weeks without prior notice from the course start date, the pre-paid amount will not be refunded.
5. All students registered with JOYFUL are required to attend for a minimum of 4 weeks. There will be no refunds for training periods of less than 4 weeks.
6. Arriving late or being absent during the training period will not result in any refund, and there are no makeup classes for missed time.
7. In case of cancellation due to personal illness or accidents/illness in the immediate family, 50% of the remaining tuition fees will be refunded regardless of the notice period (diagnosis certificate required).
8. If more than 50% of the total training period has already been completed, no refund is possible.
9. For less than 50% of the total training period, 50% of the remaining tuition fees will be refunded every 4 weeks.
10. There will be no refunds if a student is expelled from the center due to inappropriate behavior.

Article 3 Training Period Holding Regulations

1. Training period holding deducts 2 weeks (hotel room cost and tuition), and it is only possible if there are at least 4 weeks remaining after the deduction.
2. Re-entry must be done within 6 months, and automatic cancellation occurs if it exceeds 6 months.
3. Visa extension costs and SSP issuance fees, paid in full at the time of admission, are non-refundable. In the case of re-entry requiring visa extension and SSP issuance (valid for 6 months), the necessary fees must be paid again.
4. Re-entry is possible only if there are available hotel rooms.

Article 4 Exemption Regulations

1. If JOYFUL is unable to provide services contracted due to force majeure such as natural disasters, unforeseen circumstances, or events beyond control like flight delays or cancellations, or due to orders from the training or departure country, or the spread of diseases like COVID-19, JOYFUL or its agents are not liable.
2. JOYFUL is not responsible for personal or property damage, loss, or harm resulting from actions taken without prior permission.
3. JOYFUL is not responsible for property or personal damages occurring during travel, outings, or overnight stays.
4. Classes are typically held Monday to Friday, with no classes on Philippine holidays and non-compensatory for such days. The minimum guaranteed class days are 18 days per month.
5. In the event of exchange rate or tax increases (more than 10% in 6 months), changes in Philippine government laws, or reasons beyond JOYFUL's control, the right to adjust prices is reserved. If necessary, JOYFUL may change the start date, course curriculum, and program for a better quality of education for trainees.
6. JOYFUL may give warnings or notices to students who violate rules, engage in unauthorized class absences, violence, or inappropriate behavior that disrupts the academic atmosphere. If not rectified after several warnings, JOYFUL has the authority to expel the student.
7. If students lead others for improper purposes, organize protests causing harm to the school, JOYFUL has the authority to expel the student without warning and seek damages for any losses incurred.
8. In cases of student issues leading to expulsion or refund actions, JOYFUL may inform the student's guardian and study abroad agency of the results.

Article 5 Class Participation and Change Request

1. Authority over class hours and teacher assignments is exclusively held by JOYFUL, and students cannot raise objections without valid reasons.
2. All students must adhere to class hours. Entry and class participation may be denied if a student is more than 5 minutes late.
3. Students must dress appropriately before attending classes, avoiding excessively short skirts or shorts and wearing slippers. Minimum etiquette related to classes must be observed.
4. Class schedule changes are allowed once every 2 weeks. Requests must be submitted through the application form, and applications are accepted every Thursday from 09:00 to 18:00.
5. In case of a dispute involving a Philippine teacher's labor dispute or absence due to unavoidable circumstances, class time may be changed to another day or teacher within 5 minutes after the start of the class.
6. After the level test, if a student's English level is significantly higher or lower than other students, JOYFUL has the right to rearrange the student into a separate educational program. In this case, the student does not have the right to demand compensation for the changed classes.

Article 6 Class and Exam Participation

1. Students with an attendance rate below 90% in regular classes (1:1/1:4) may face disadvantages according to JOYFUL regulations.
2. All JOYFUL students must take exams according to the regulations of their respective campuses.
3. Students who do not take exams may face disadvantages according to the regulations.
4. In case of disputes over the priority of selecting teachers, attendance rate, and mock exam participation rate will be considered.

Article 7 Miscellaneous

1. Course completion certificates are provided to students who fulfill the minimum attendance requirement (80%) and attend the graduation ceremony held at the end of the registration period. Transcripts and attendance records are provided upon request from JOYFUL. Certificates will not be issued if the attendance rate is below 80%.
2. Costs for additional services must be paid locally.
 - a) Visa extension fee: The fee for extending the visa, payable to the Philippine Immigration, is based on the student's stay period, and the full visa extension fee is paid in a lump sum at admission.
 - b) SSP fee: The cost for obtaining a certificate to legally acquire and maintain student status for those who entered the Philippines on a tourist visa. If transferring from another language school, SSP must be reissued according to immigration regulations.
 - c) ACR I-CARD fee: All foreigners residing in the Philippines for more than 59 days must obtain an I-CARD, a cost used as evidence of legal residence in the Philippines for foreigners registered with immigration. It is issued to enhance supervision of foreign tourists visiting the Philippines and for easy identification.
 - d) Course, hotel room change fee: Additional costs may arise for changes, extensions, and alterations to classes and hotel rooms, conducted according to JOYFUL regulations.
 - e) Airport pickup fee, facility management fee: Pickup fee (1000 pesos) and management fee (3000 pesos for 4 weeks) must be paid on the opening day.
 - f) Others: Personal expenses such as travel, medical expenses, telephone costs, and allowances are the student's responsibility.
3. Information regarding all illnesses, allergies, mental illnesses, physical disabilities, etc., must be provided to the study abroad agency and JOYFUL before registration. If JOYFUL determines that there are reasons that may interfere with other students' studies or if the information on the application does not match the health condition upon arrival, registration may be refused, and the student may be repatriated.
4. The responsibility of JOYFUL EDU terminates upon the completion of the student's training period.

Hotel Room Regulations

Article 1 General Hotel Room

1. Room assignments are primarily JOYFUL's exclusive authority. Students will live in the designated room after check-in unless there are universally justifiable reasons accepted by JOYFUL.
2. Apart from changing rooms as specified during registration, if a student personally changes rooms for local reasons, a fee of 1,000 pesos will be charged for the cost of preparing a new room. (Additional charges for single rooms are separate.)
3. Students should aim to check into hotel rooms concurrently with their classes and must sign an agreement form. If a student violates the hotel room regulations, JOYFUL may notify them of penalties.
4. Personal consumables, except for hotel amenities (shampoo, body wash, toothbrush, tissue, etc.), are not provided; students should prepare them individually.
5. JOYFUL is not responsible for compensating students for lost items unless it is proven to be theft committed by JOYFUL staff through official investigation.
6. Items provided in each room are JOYFUL's property. Students are not allowed to acquire them arbitrarily or move items to different locations. In the event of damage to JOYFUL-owned items or facilities in the hotel room, students must take corresponding compensation measures.
7. Cooking, drinking, and smoking are strictly prohibited in hotel rooms and common areas for fire prevention and pest control. Violations may result in warnings and eviction.

Article 2: Restrictions and Visitation Rules

1. All students must adhere to the specified restricted access times.
 - a) The restricted access times for JOYFUL T-Shine Campus are from 12:00 AM to 6:00 AM Monday through Saturday, and from 10:00 PM to 6:00 AM on Sundays or public holidays (if there are classes the following day). Access is controlled by security guards at the hotel entrance during these times. If attempting to leave or return late outside of the designated times, JOYFUL will issue a warning.
 - b) In the event of unavoidable circumstances requiring a student to leave or stay out overnight, written permission must be obtained from JOYFUL in advance.
2. Visiting another student's room, especially of the opposite sex, is strictly prohibited. Violation of this rule and entering another student's room without permission may result in immediate expulsion without warning.
3. All visits by external individuals are regulated by security guards at the entrance of JOYFUL, and even permitted visitors are not allowed to enter hotel rooms.
4. Access for accompanying family members of JOYFUL students who have not been notified or registered in advance may be restricted.

Article 3: Rules Regarding Alcohol and Smoking

1. Drinking is only allowed in designated areas (7th-floor rooftop, poolside parasols, and hotel lobby). Drinking in classrooms or hotel rooms is strictly prohibited.
2. Smoking is permitted only in designated areas to prevent fire hazards. Smoking in hotel rooms triggers fire alarms and may result in immediate eviction and damage claims.

Article 4: Cleaning and Laundry Services

1. Internal cleaning services are available upon request, with a maximum frequency of twice a week. Bed sheets are replaced once a week.
2. Laundry services are available on Mondays, Wednesdays, and Fridays at the academy building's first floor.

Article 5: Warnings, Alerts, and Expulsion Measures

1. Students can be expelled without warning for behaviors such as drinking or smoking in classrooms or hotel rooms, entering others' rooms with inappropriate intentions, intentionally damaging JOYFUL property, or causing property damage.
2. Violation of established JOYFUL rules or attendance below 50%, engagement in disputes, using offensive language, displaying a bad attitude, or other similar reasons may lead to disciplinary action by JOYFUL. The severity of the violation will determine the nature of the warning or potential expulsion.
3. If warnings accumulate and reach the third warning, JOYFUL reserves the right to expel the student.
4. Following expulsion, the student must check out within 12 hours.
5. There will be no refund issued upon expulsion.



PREMIUM ENGLISH CENTER

JOYFUL EDU



+82-70-4922-8400



joyfultshine@gmail.com



T-Shine Hotel, Sitio Tribu, Mactan Island, Lapu-Lapu City, 6015 Cebu, Philippines